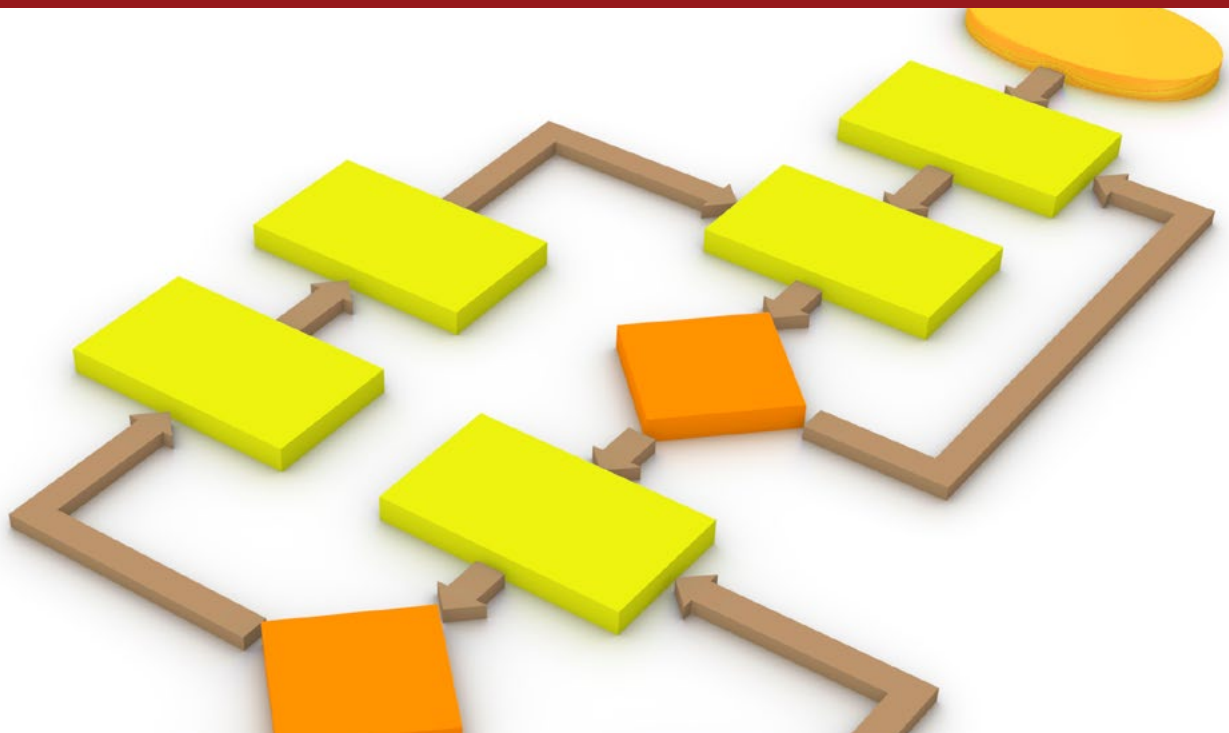


FME Desktop

Techniques in FME

Advanced



This course will introduce users to advanced techniques in the use of FME Desktop and the different utilities available, including building advanced workflows, and running FME on the command line.



2 Days
Duration



Advanced
Skill Level



8
Students

Topics Covered

- ⊕ Build advanced transformations using FME Workbench
- ⊕ Create multipurpose, flexible workspaces employing Generic and Dynamic capabilities
- ⊕ Create custom transformers and formats
- ⊕ Work with FME and spatial databases
- ⊕ Master the latest FME features
- ⊕ Share FME resources
- ⊕ Advanced FME workflows
- ⊕ Use FME efficiently
- ⊕ Advanced attribute handling

This course is run by a Safe Software FME-Accredited Trainer

Prerequisites

- ⊕ Completion of *FME Desktop: Introduction to FME (Basic)*
- ⊕ Familiarity with GIS concepts

NOTE: Please note that whilst every care is taken to ensure the content of this brochure is correct, this information is to be used as a guide only. Course information is subject to change without notice and all information is current at the time of printing. FME is a registered trademark of Safe Software Inc.



www.giscollege.com.au



www.gispeople.com.au

