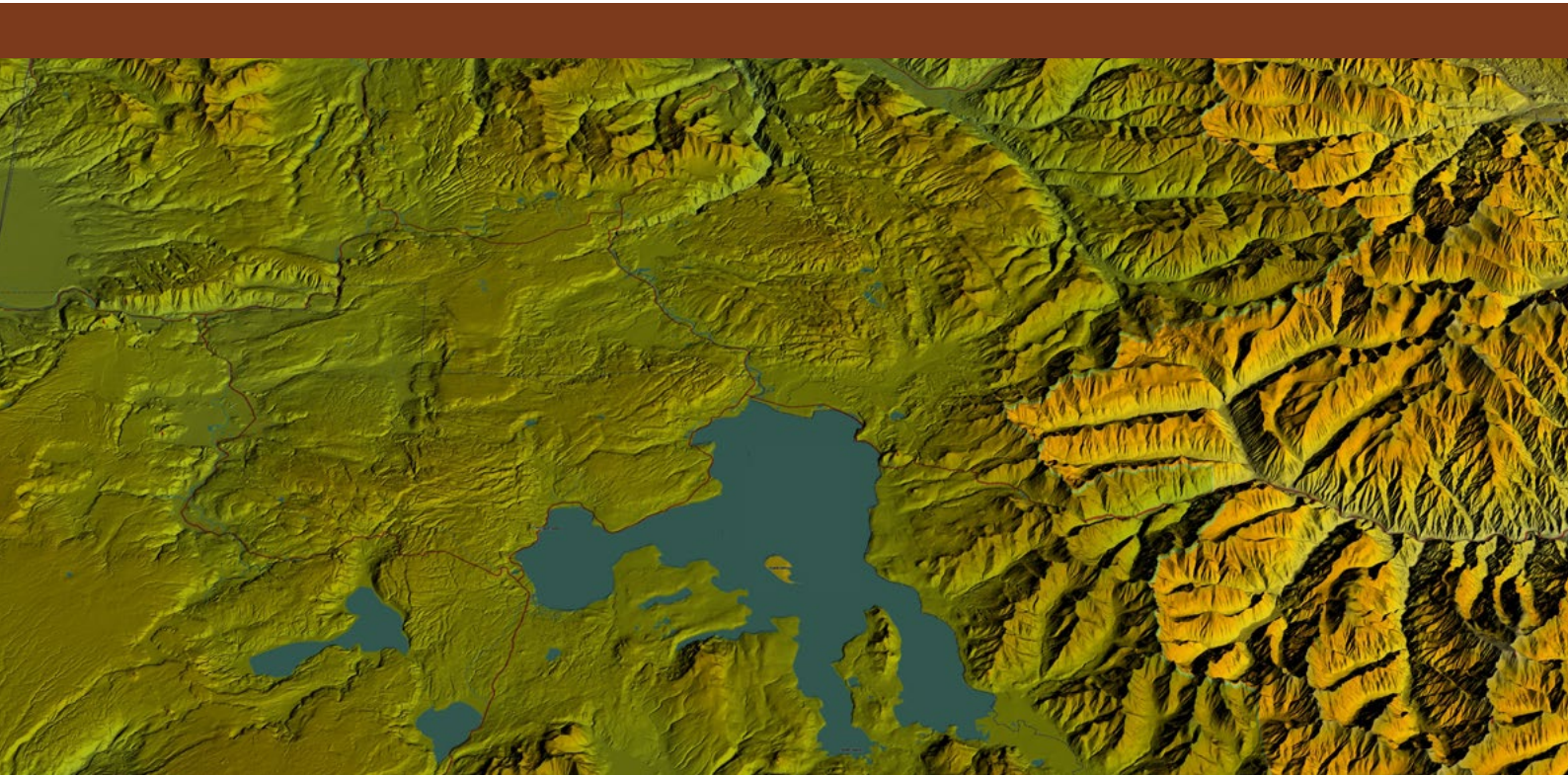


MapInfo Professional

Encom Discover 3D

Advanced



This intensive, hands-on course will equip geologists and other geoscientists with the skills to model and analyse 3D data using Encom Discover 3D.



www.giscollege.com.au



www.gispeople.com.au





2 Days
Duration



Advanced
Skill Level



8
Students

Topics Covered

- ⊕ Understand how Discover 3D works within the MapInfo environment
- ⊕ Link data from Discover drillhole projects
- ⊕ Understand the different methods of adding data to the 3D environment
- ⊕ Import and export including 3D georeferencing
- ⊕ Navigation within the 3D environment
- ⊕ Advanced symbolisation in the 3D environment
- ⊕ Manage the Workspace tree
- ⊕ Query and analysis
- ⊕ Digitise and manage 3D features
- ⊕ Voxel model generation and display
- ⊕ Extrusion and wireframing surfaces and solids
- ⊕ Plan future drill programmes
- ⊕ Create fly-throughs
- ⊕ 3D utilities
- ⊕ Troubleshooting

Prerequisites

- ⊕ Completion of *MapInfo Professional: Discover for Geoscientists 2 (Intermediate)*
- ⊕ Familiarity with 3D concepts
- ⊕ Understanding of geological data and analysis

NOTE: Please note that whilst every care is taken to ensure the content of this brochure is correct, this information is to be used as a guide only. Course information is subject to change without notice and all information is current at the time of printing. MapInfo and Encom Discover are registered trademarks of Pitney Bowes Inc.



www.giscollege.com.au



www.gispeople.com.au

